



Wellfield Schools



South Wellfield First & Wellfield Middle: Working Together for Your Child's Future

Our Shared Vision

"Putting families first: a united journey from Early Years to Year 8, where every child is safe, respected, and ready to achieve their best."

What's Happening?

We are proposing to **federate** South Wellfield First School and Wellfield Middle School. This means the two schools will share **one governing body and one headteacher**, while keeping their own names, uniforms and traditions.

Why Are We Considering This?

- **Falling pupil numbers** and financial pressures are affecting schools across North Tyneside.
- Federation helps us **protect both schools**, keep the **three-tier system**, and avoid forced changes like school closures or joining a Multi-Academy Trust.
- It creates a **stronger, more stable future** for our children and community.
- **Federation creates a larger combined structure**, helping Wellfield Middle maintain curriculum breadth and staffing flexibility despite fewer pupils.
- **Shared resources and leadership reduce financial pressure**, making the school more sustainable after its admission number drops from 90 to 60.

What Will Stay the Same?

- Both schools remain open with their own identity.
- Children will still have the option to move from the First School to the Middle School in Year 5.
- Day-to-day life in each school will feel the same.

What Will Change?

- Children at South Wellfield First from September 2027 will be **guaranteed a place at Wellfield Middle**.
- A single governing body will make strategic decisions for both schools.
- Leadership and resources can be shared to improve opportunities for pupils.

Benefits for Families

- **Security of place:** No more uncertainty about moving to Wellfield Middle.

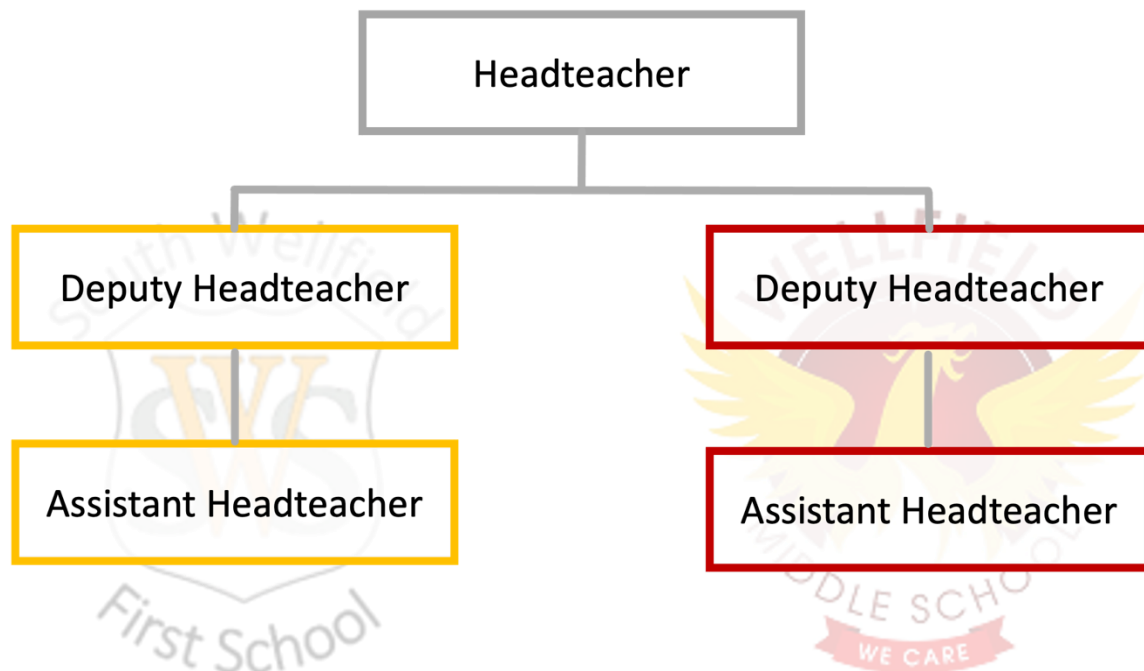
- **Consistency:** Shared values, expectations, and curriculum across both schools.
- **Community stability:** Protects local choice and avoids disruption.
- **Better communication:** One team working together for your child.

Benefits for Children

- A **smooth journey** from Early Years to Year 8.
- Access to **specialist teaching** and wider opportunities like clubs and trips.
- Stronger support for **SEND and vulnerable pupils**.
- A greater sense of belonging in one connected school community.

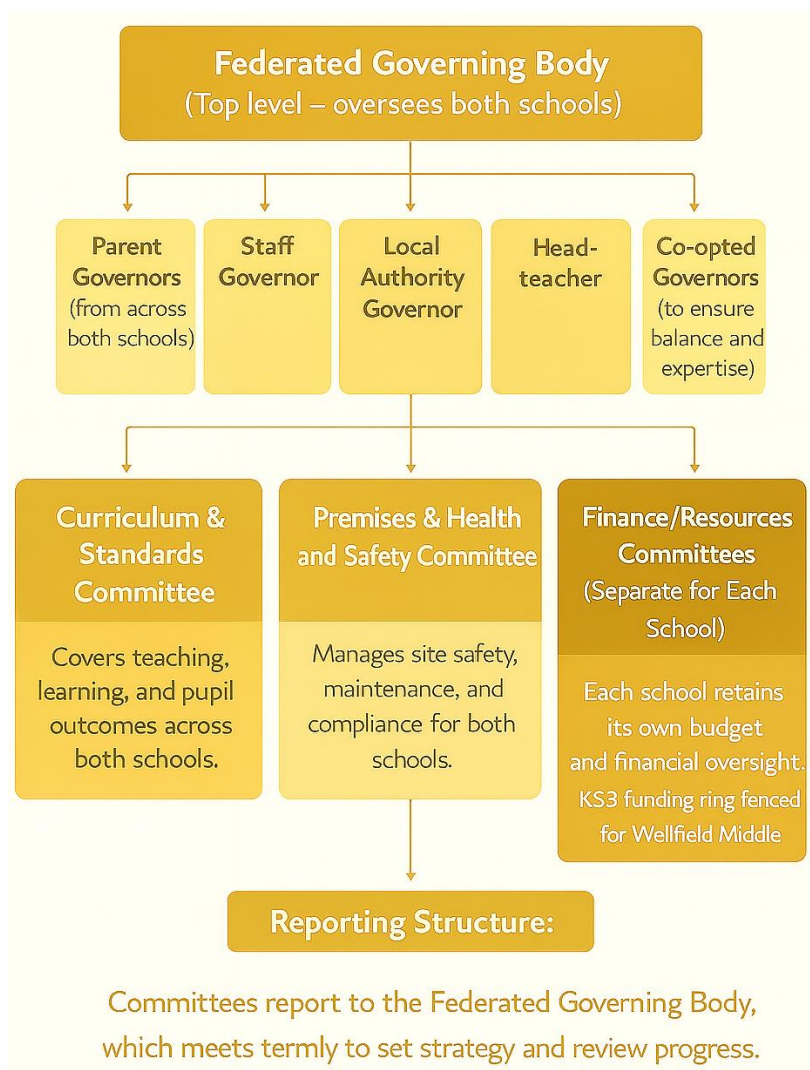
Leadership

- The federation will have **one shared headteacher** who leads both schools and sets the overall vision and standards.
- Each school will keep its **own leadership team**, just as now:
 - **One deputy headteacher** and **one assistant headteacher** in each school.
- This means day-to-day leadership in each school remains strong and familiar, while the shared headteacher ensures consistency across both schools.



Governance

- A **single federated governing body** will oversee both schools.
- This governing body will:
 - Set the strategic direction for the federation.
 - Include **parent governors**, staff governors, and co-opted governors from both school communities.
- Each school will keep its **own budget**, with separate Finance Committees to manage spending, while other committees (e.g., Curriculum and Standards) will work jointly.
- The aim is to make decisions that benefit all children from Early Years to Year 8, while maintaining fairness and local representation.





Wellfield Schools



Frequently Asked Questions

Q: What is a federation?

A federation is when two or more schools share a single governing body and one headteacher, while keeping their own identity, budgets, and staff.

Q: Will the schools keep their names and uniforms?

Yes. Both South Wellfield First and Wellfield Middle will keep their names, uniforms, and traditions.

Q: Will my child still learn in the same building?

Yes. Pupils will continue to attend the same school buildings as now. The day-to-day running of each school will remain the same.

Q: Will my child be guaranteed a place in Wellfield Middle if they attend the First School?

Yes, but only once the federation consultation process was complete. Under federation, and a review of Wellfield Middle School's admission policy, children at South Wellfield First would have a guaranteed place at Wellfield Middle.

Q: Do both schools need to be foundation schools before they can federate?

Yes. For South Wellfield First School to federate with Wellfield Middle, it would first need to join the North Tyneside Learning Trust and become a foundation school.

This change means:

- Both schools would have the same legal status as foundation schools.
- The federated governing body would become the admission authority for both schools, allowing it to set admissions policies (in line with the School Admissions Code).

Q: Will my child be guaranteed a place in Whitley Bay High School?

No. Admissions to Whitley Bay High School remain unchanged.

Q: Would this change admissions for Wellfield Middle for September 2026?

No, as the admission process is underway.

Q: What does this mean for staff?

Staff will continue to be employed by their current school. In the future, some staff may have opportunities to work across both schools if they wish.

Q: What does this mean for school finances?

Each school will keep its own budget. Federation allows us to share costs and strengthen financial stability.



Wellfield Schools



Q: Why are we considering this now?

Falling birth rates and financial pressures are affecting many schools locally and nationally. By federating voluntarily, we strengthen our position, protect the three-tier system locally, and avoid the risk of forced changes in the future.

Q: Who will make the final decision?

Both governing bodies will review the proposal. If they agree, it will go out to consultation with parents, staff, and the community. Governors will then make a final decision based on feedback.

Q: When could federation start?

If approved, federation could begin in **September 2026**.



Wellfield Schools



Myth-Busting: Setting the Record Straight

Myth 1: One of the schools is closing.

✗ Not true. Federation is about protecting both schools for the future. Both South Wellfield First and Wellfield Middle will remain open, with their own names, uniforms, and buildings.

Myth 2: My child will have to move schools earlier.

✗ No change. Children will continue to attend the First School until the end of Year 4, then move to the Middle School in Year 5, as they do now. The middle school will continue to offer Year 5-8.

Myth 3: This is the same as becoming an academy.

✗ No. A federation is different from an academy trust. Both schools keep their own budgets and a high degree of independence. The governing body stays local and focused on our community. There is no intention from either school to join a MAT.

Myth 4: Teachers will be forced to move between schools.

✗ No. Existing staff will stay employed by their current school. Over time, some staff may choose to work across both schools if it suits them, but this will not be compulsory.

Myth 5: The schools are in financial trouble.

✗ Both schools are currently financially stable. However, falling birth rates are affecting schools across the area. Federation is a proactive step to protect our schools' long-term stability and avoid problems in the future.